

SHOP DRAWING NAME

ARCHITECT

GENERAL CONTRACTOR

EQUIPMENT SUPPLIED BY:

**SPECIFICATIONS**

2 LANDING  
**VERTICAL LIFT**  
L-120

CAR 38 1/4"Dx48"Wx42"H  
CODE(S) 5  
CAPACITY 750 LBS. AT 10 F.P.M.

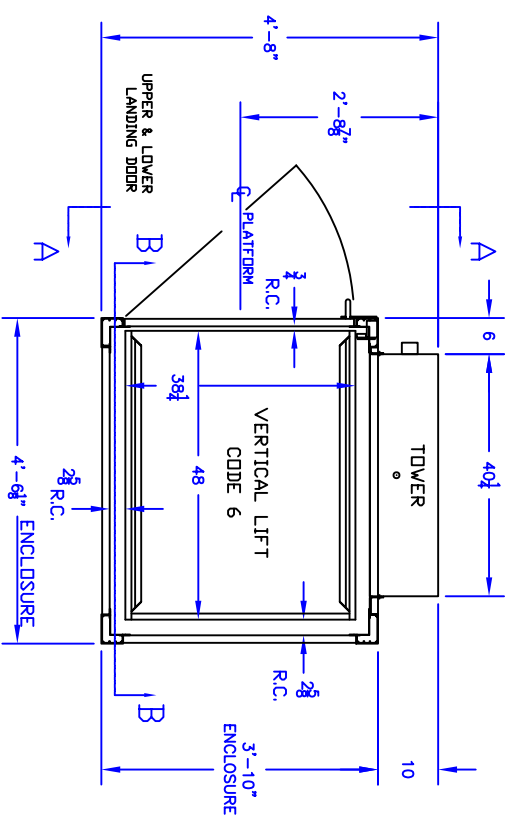
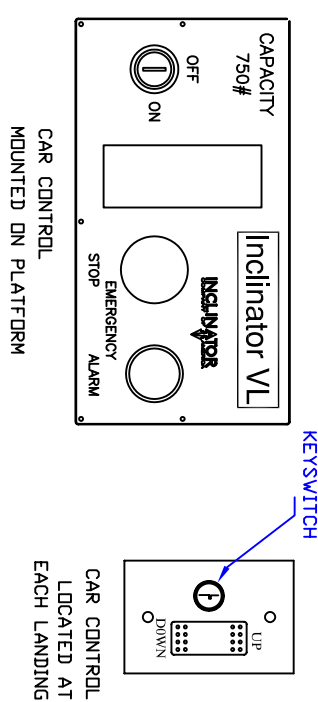
- ☑ ALL DOORS MUST BE INTERLOCKED
  - ☑ KEYSWITCH OPERATION
  - ☑ AUTO FOLD RAMP
  - ☑ STATIONARY RAMP
  - ☑ LANDING GATE W/ INTERLOCK
  - ☑ PLATFORM GATE WITH INTERLOCK
  - ☑ EMERGENCY STOP
  - ☑ EMERGENCY ALARM
  - ☑ MANUAL LOWERING
  - ☑ INSTANT REVERSE
  - ☑ ENCLOSURE DOORS BY INCDA
  - ☑ ENCLOSURE WALLS BY INCDA
  - ☑ OUTDOOR PACKAGE
  - ☑ EMERGENCY PLATFORM LIGHT
  - ☑ VENTILATION FAN
- NOTICE TO ELECTRICAL CONTRACTOR:  
INSTALL 110V. DIS. SW. TYPE OUTLET  
1 HP. MOTOR 120V. SINGLE PHASE 60 CYCLE  
20 AMP MAIN LINE FUSE

NOTE: ALL HOISTWAY CONSTRUCTION MUST COMPLY WITH NATIONAL, STATE, AND LOCAL CODES. PLEASE ADVISE INCDA OF ANY CHANGES NEEDED TO THE DRAWING FOR COMPLIANCE IN YOUR AREA.

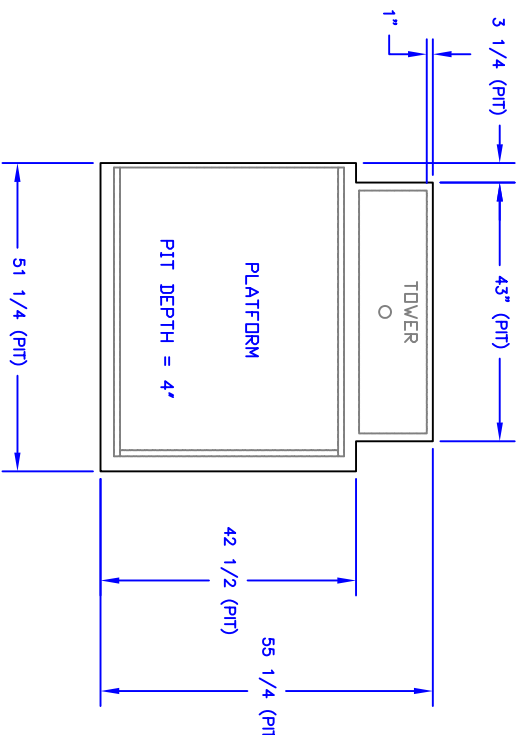
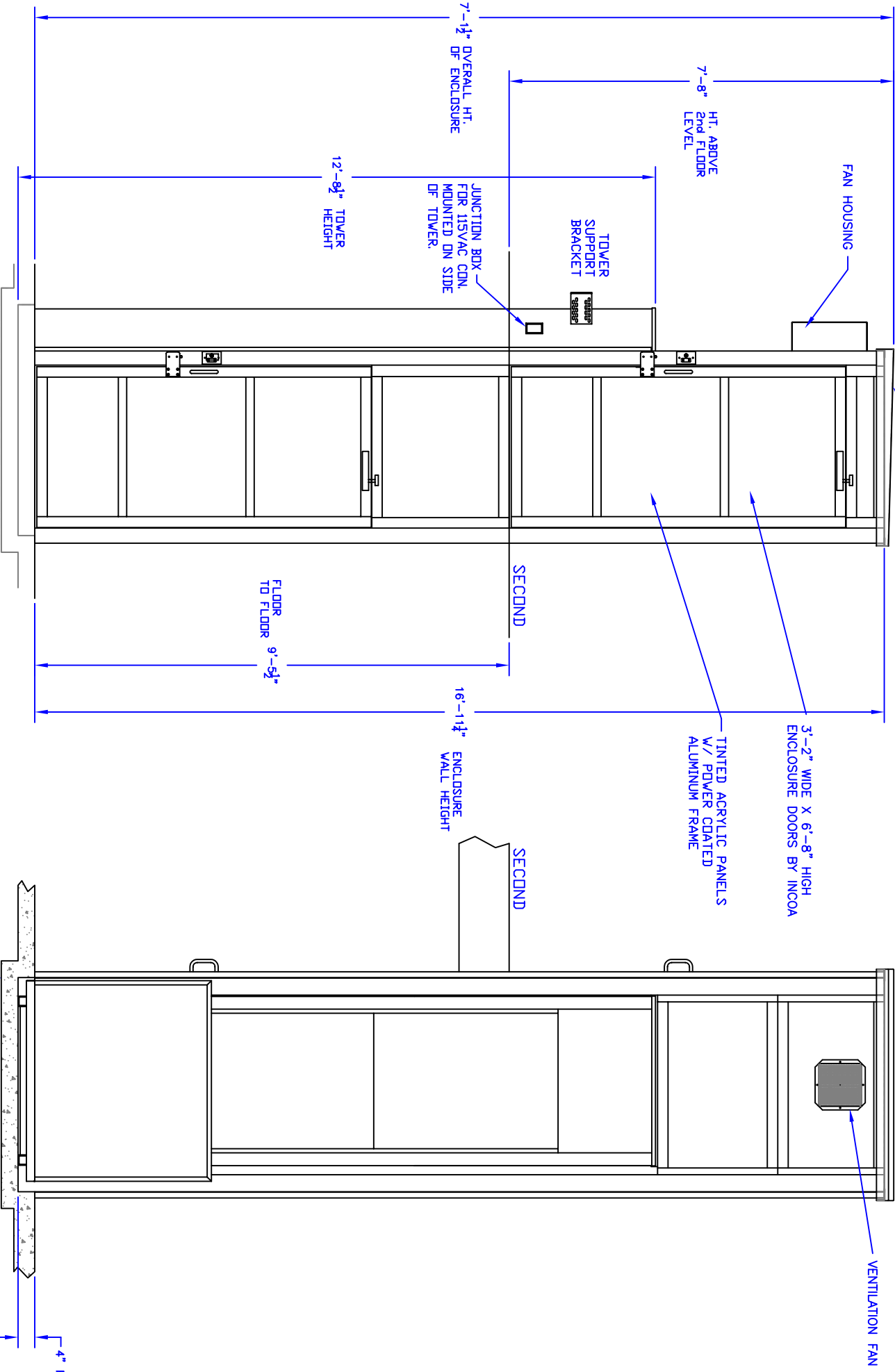
INCDA JOB # -  
DEALER P.O. # -  
DRAWING BY: DLUCASSEN  
DATE: 01/09/07

DRAWING IDENTIFICATION NUMBER

VL-C



115V. DIS. SW. BY G.C. MUST BE LOCATED WITHIN SIGHT OF LIFT



- NOTE:**
1. WHEELCHAIR LIFT PIT FLOOR MUST BE 3500 PSI CONCRETE, 4" MIN. THICK.
  2. PIT FLOOR TO HAVE A SMOOTH TROWEL FINISH SURFACE TO BE LEVEL AND FLAT TO WITHIN ±1/8" IN ANY DIRECTION.

VIEW A-A

VIEW B-B

SEE NOTES 1 & 2